



The 5 Mistakes Southeast Waterfront Make

(And How to Avoid Them)

AUTUMN MAUPIN

REALTOR · LIFESTYLE TRANSITION SPECIALIST

Welcome

Buying a waterfront home is one of the most exciting lifestyle decisions you can make — but it's also one of the most misunderstood. Most buyers evaluate a waterfront property the same way they evaluate a traditional home. In reality, the shoreline determines nearly everything about your daily experience.

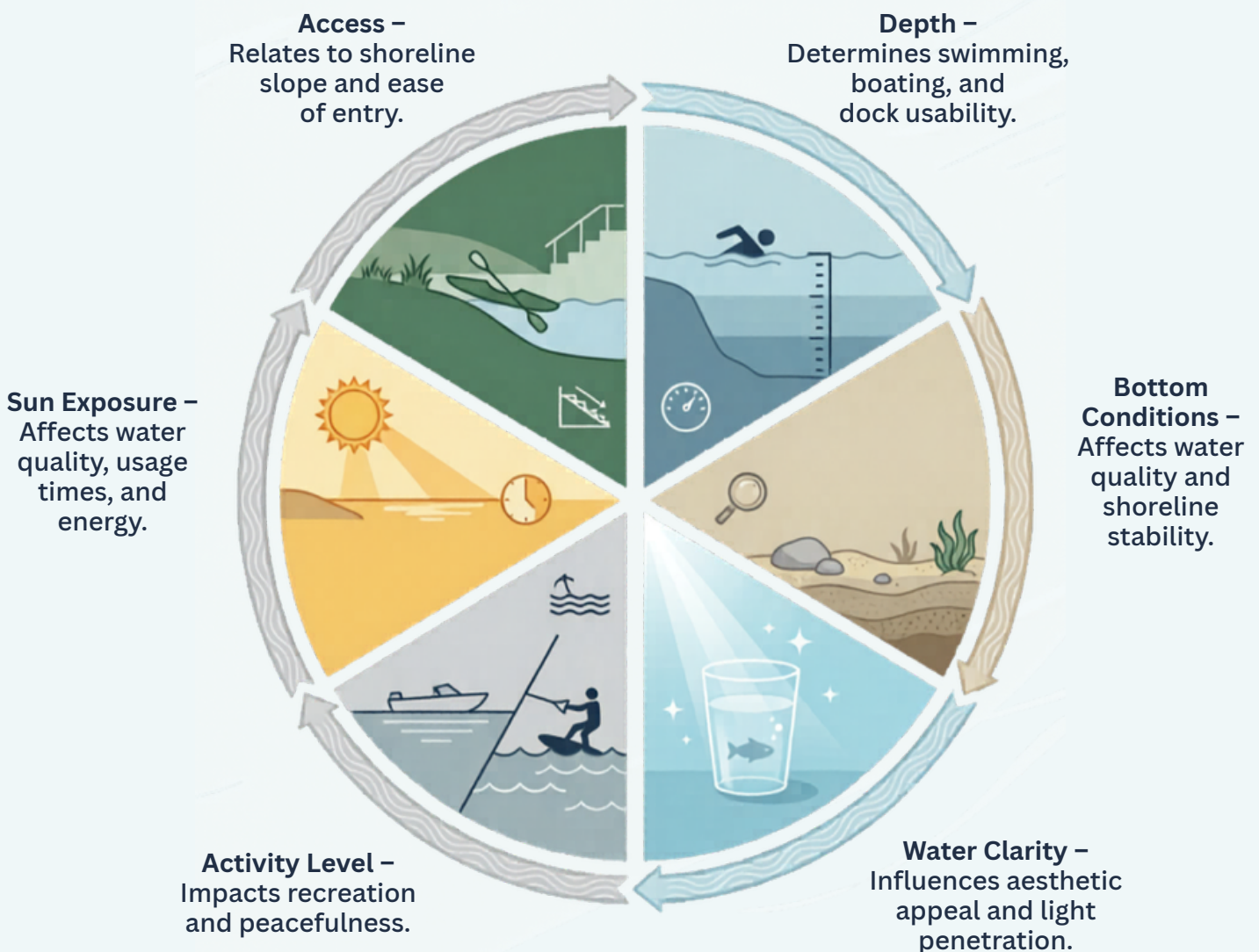
This guide was created to help you avoid the most common mistakes buyers make when evaluating Southeast Michigan waterfront homes. My goal is simple: to help you understand the water, the shoreline, and the lifestyle before you fall in love with the house.



Mistake #1: Assuming All Waterfront Is the Same

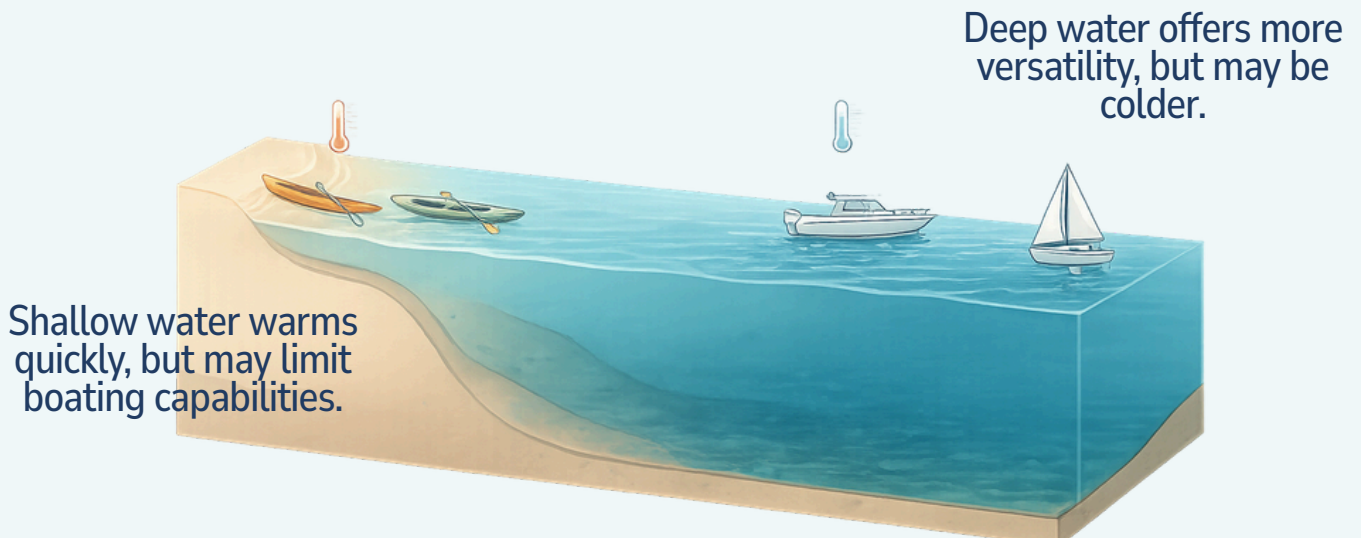
Most buyers believe “waterfront is waterfront” but in reality every shoreline in Southeast Michigan can be evaluated through six key dimensions that dramatically shape your experience.

The 6 Dimensions of Waterfront Quality™



“You can remodel a home, but you can’t remodel a shoreline.”

Mistake #2: Ignoring Depth & Bottom Conditions



SAND

Comfortable for wading, ideal for swimming, provides stability.



MUD

Sticky, can feel unstable, may cause water clarity issues, often found in sheltered bays.



MUCK/MARL

Soft, often silky or cloudy, may require footwear, less stable.

ROCKS

Can be hard on feet, provides good clarity and stability, water shoes recommended.



Depth and bottom conditions shape how you use your shoreline every single day.

MISTAKE #3: Overlooking Lake Activity & Noise

Every lake — and every section of a lake — has its own rhythm. Some areas are peaceful and slow. Others are active, social, and full of movement.

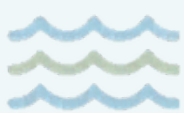
QUIET COVE



HIGH-WAKE CORRIDOR



There is no 'right' choice.
Only the right choice for your lifestyle.



Quiet coves offer calm mornings, easy paddling, and peaceful evenings.



Ideal for morning coffee, reading, and enjoying nature undisturbed.



Perfect for low-impact activities like kayaking, canoeing, and wildlife viewing.



High-wake corridors offer energy, boating, and action — but also noise and waves.



Great for water sports, socializing, and hosting lively gatherings.



Expect higher noise levels from boat engines, music, and social gatherings.

Mistake #4: Misjudging Sun Exposure & Orientation



North-facing shorelines may feel cooler and more shaded



East-facing shorelines offer peaceful sunrises and cooler afternoons



South-facing shorelines offer the most consistent light

West-facing shorelines offer golden evenings and warm late-day sun



Sun exposure shapes the mood, comfort, and rhythm of your waterfront lifestyle.

MISTAKE #5: UNDERESTIMATING ACCESS & USABILITY

Not all shorelines are equally usable.



NATURAL BEACH ENTRY:

Ideal for swimming, kayaking, and easy family access with gradual incline.



STURDY TIMBER STEPS:

Secure access for swimmers and launching small watercraft, suitable for deeper shores.



STONE SEAWALL:

Limited direct access, best for fishing, viewing, and property protection, often requires ladders.



SIMPLE DOCK SYSTEM:

Excellent for boating, fishing, and mooring watercraft, providing direct deep-water access.



EFFORTLESS ENJOYMENT:

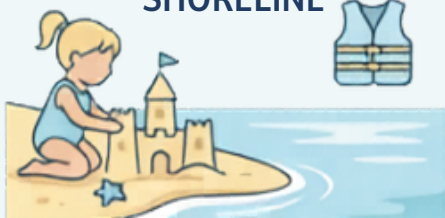
Shallow, gradual access supports spontaneous swimming and water play.

BOATING LIFESTYLE:

Direct deep-water access via a dock simplifies boating and watercraft activities.

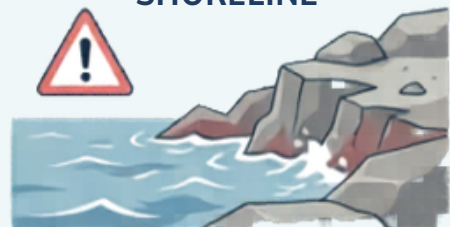


CHILD-FRIENDLY SHORELINE



Safe, gradual entry with minimal hazards.

CAUTION-REQUIRED SHORELINE



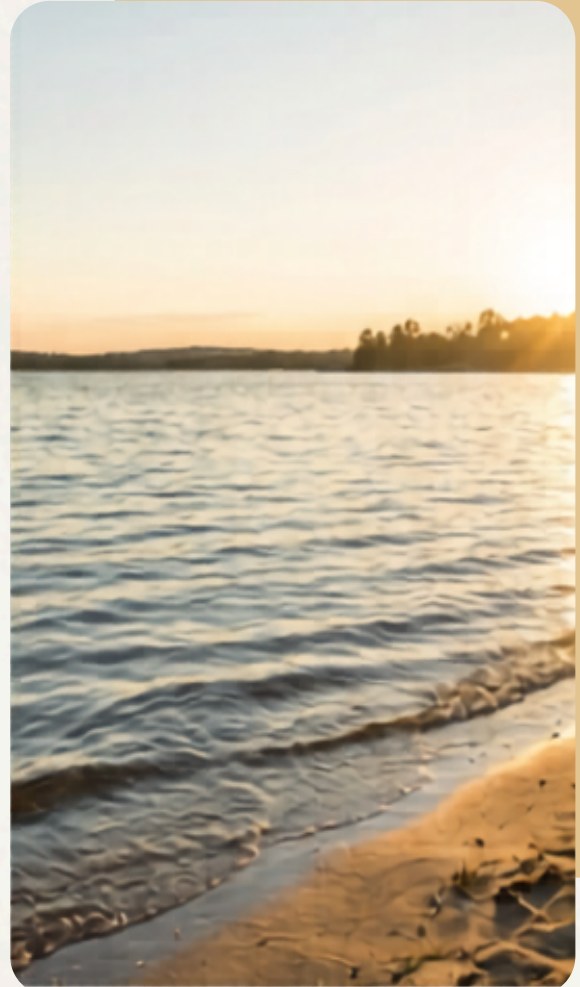
Steep drop-offs, rocky barriers, or strong currents require supervision.

Your shoreline should match your lifestyle — not the other way around.

Your Next Step

Choosing the right waterfront home isn't about luck — it's about understanding the shoreline, the water, and the lifestyle you want to create.

If you're ready to explore Southeast Michigan waterfront homes with clarity and confidence, I'm here to guide you.



Autumn Maupin
Realtor & Lifestyle Transition Specialist
248-860-6720
autumn.maupin@exprealty.com

